



SecureIT Plus

Parental Controls Module

User's Guide



Table of Contents

Parental Controls Overview	3
Enabling Parental Controls	3
Managing User Specific Settings	9
Accessing the Internet	15
Automatic Updates	18

Notice to Users

©2009 SecurityCoverage, Inc. All rights reserved. This manual in whole or in part, may not be reproduced, translated, or reduced to any machine readable form without prior written approval.

SECURITYCOVERAGE PROVIDES NO WARRANTY WITH REGARD TO THIS MANUAL. THE SOFTWARE, OR OTHER INFORMATION CONTAINED HEREIN AND HEREBY EXPRESSLY DISCLAIMS ANY IMPLIED WARRANTIES OF MERCHANTABILITY OR FITNESS FOR ANY PARTICULAR PURPOSE WITH REGARD TO THIS MANUAL. THE SOFTWARE, OR SUCH OTHER INFORMATION, IN NO EVENT SHALL SECURITYCOVERAGE, INC. BE LIABLE FOR ANY INCIDENTAL, CONSEQUENTIAL OR SPECIAL DAMAGES, WHETHER BASED ON TORT, CONTRACT, OR OTHERWISE, ARISING OUT OF OR IN CONNECTION WITH THIS MANUAL, THE SOFTWARE, OR OTHER INFORMATION CONTAINED HEREIN OR THE USE THEREOF.

SecurityCoverage, Inc. reserves the right to make any modification to this manual or the information contained herein at any time without notice. The software describes herein is governed by the terms of a separate user license agreement

Updates and additions to software may require an additional charge. Subscriptions to online service providers may require a fee and credit card information. Financial services may require prior arrangements with participating financial institutions.

SecurityCoverage and the SecurityCoverage and SecureIT Services logos are trademarks of SecurityCoverage, Inc. All other trademarks are trademarks of their respective owners.

Parental Controls Overview

The Internet is becoming a routine part of the way we live our lives. Everyday it seems we find at least one reason to use it. E-mails, on-line chatting with friends, banking, shopping, doing research for school or simply playing an online game – the Internet is an extremely useful tool. However, with its use comes inherent dangers – dangers that can also impact every aspect of your life, including the safety of your family.

The Parental Controls feature of SecureIT Plus assists you in managing the amount of time your family can spend on the Internet and helps you protect them from undesirable content that could ultimately prove harmful. This solution provides the following key elements to ensure the protection you need:


- Internet Content Filtering
- Internet Access Controls
- Time Management Controls
- Monitoring/Reporting
- Automatic Updates

Control of the functions and features found in the Parental Controls module of SecureIT Plus can be accessed in the Advanced View of the Management Console. During the setup process, you can customize the level of control on a computer or user basis.

Use of this tool will help you monitor the Internet's use in your home and help you teach your family to make the best decisions in terms of accessing inappropriate web sites.

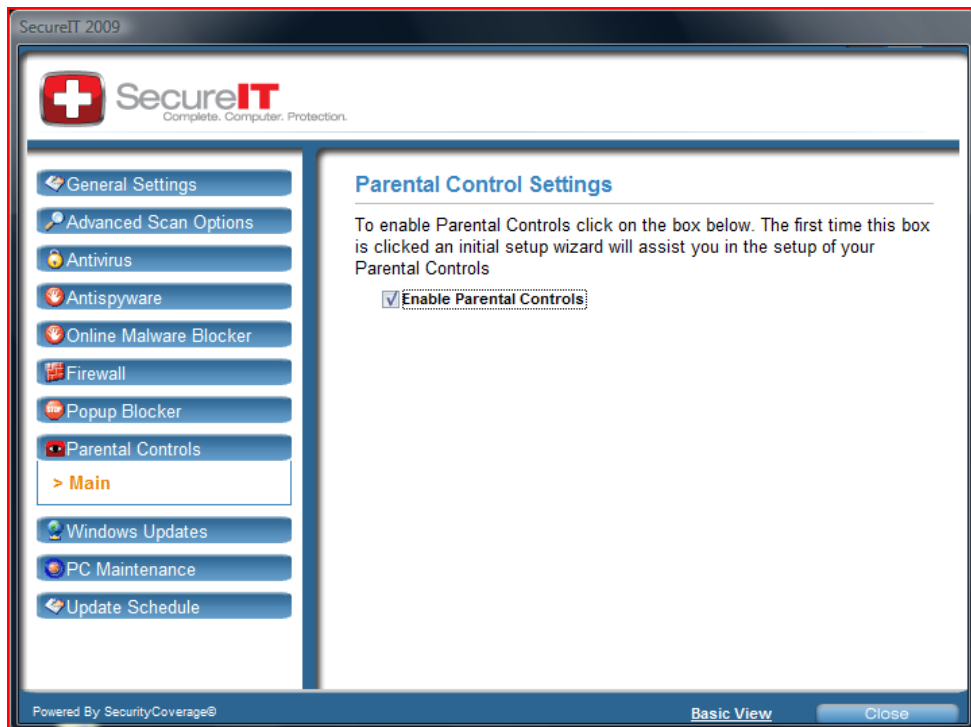
It is important to note that this technology will provide a level of support, but parental involvement is still the last line of defense in the protection of your family.

Enabling Parental Controls

After installing SecureIT Plus with Parental Controls, the functionality is disabled by default and needs to be enabled. To enable Parental Controls, open the SecureIT Management Console by right-clicking on the  found in your system tray. Select "Open SecureIT Management Console," then select the Advanced Settings button on the bottom of the window.

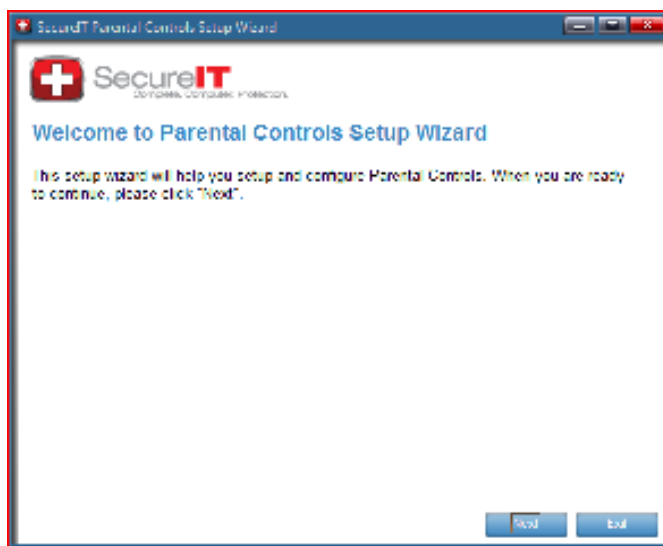
It is required that during setup, the administrator have administrative rights and privileges on the computer.

Select “Parental Controls” on the left side of the screen. On this page, click the box entitled “Enable Parental Controls,” in order to activate the service and begin setup.



Running the Setup Wizard

When a user elects to enable Parental Controls, the Setup Wizard is launched. The Setup Wizard walks the user through the initial setup of the Parental Controls features, providing an opportunity to customize the settings or set them at a default level.



Adding Users

Once Parental Controls are enabled, a user name and password must be established for each user profile before being allowed to access the Internet. Profiles associated with the computer running SecureIT Plus are automatically detected and created in the “Setup Users” view. (See Figure 1)

The administrator can use this area to create new user names and passwords for specific users that will be saved in the “User Profiles” section of the program.



Figure 1

If there are no profiles found, a user profile called “Administrator” will be created. The administrator can add new users and passwords by selecting the “Add User” button.

Deleting Users

If there are user profiles that are no longer used but are auto-detected during setup, or you simply wish to remove a user profile, it can be deleted by selecting the “Delete User” button. Once the “Delete User” button is clicked, the user disappears from the “User Profiles” column shown in Figure 1.

Setting Passwords

In order to set an initial password associated with a valid user, select the appropriate user from the user profiles list. Next, select the “Set Password” button. Type in a password and then confirm the password by re-typing it in the Confirm Password box. (See Figure 2)

If the password is accepted, the box will disappear and take you to the screen shown in Figure 1.

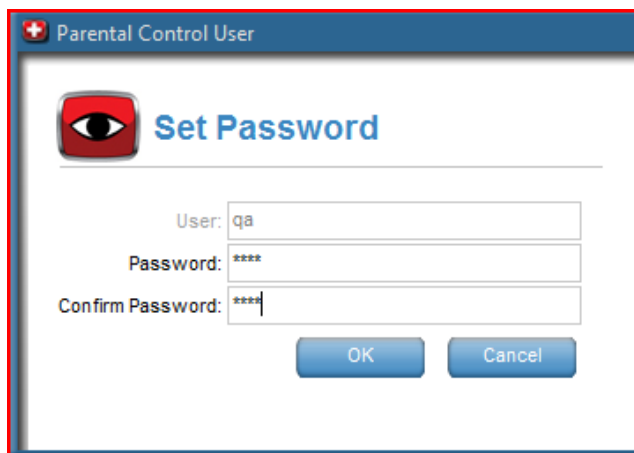
The image shows a dialog box titled "Parental Control User" with a red eye icon. The main heading is "Set Password". Below the heading are three input fields: "User:" with the text "qa", "Password:" with four asterisks, and "Confirm Password:" with four asterisks. At the bottom of the dialog are two buttons: "OK" and "Cancel".

Figure 2

If a password is not accepted, the users will receive a message stating “Passwords do not match. Please try again.” Select the “OK” button and re-enter the correct password information.

Changing Passwords

To change an existing password for a valid user, access the Parental Controls main administration page. Next, select the “Set Password” button and follow the prompts to make the change.

If there is more than one administrator account set up on an individual machine, each administrator would be allowed to make changes to passwords or settings of standard users. However, one administrator may not make changes to another administrator profile.

Setup Access

The Setup Access page allows the administrator to define the types of sites that a user can see when using the Internet. There are three levels of access that can be applied:

1. Administrator – This is the default access level for the initial user setup. Its access is unrestricted. There can be more than one account with administrator access.

2. Default – This is the default access for all non-administrator profiles created in the setup wizard. The blocked categories for the Default setting include:
 - Adult
 - Artnudes
 - Drugs
 - Gambling
 - Porn
 - Spyware
 - Virus Infected
 - Violence

3. Custom – Any changes from default are considered custom changes. Custom changes can be made by selecting or unselecting specific categories in the “Categories to Block” section. When custom changes are made, the “User Access” column for that user will automatically change from “Default” to “Custom.” (See Figure 3)



Figure 3

Tooltips

To better understand the “Categories to Block,” a Tooltip has been created for each category. Tooltips are descriptions that explain the category in further detail and can be viewed by placing the cursor over a specific category.

Setup Complete

Once all selections have been made you will see a screen that will indicate the categories you selected are being downloaded. (See *Figure 4*)

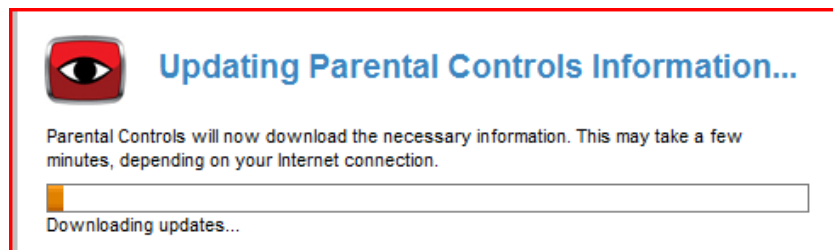


Figure 4

Once the download is complete you will see a new screen called “Setup Complete.” (See *Figure 5*)

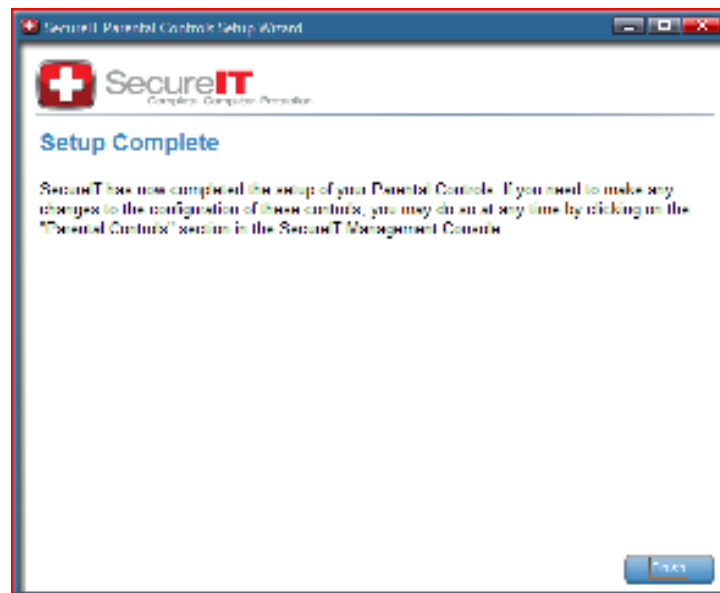


Figure 5

Select “Finish” to return to the Parental Controls section of the Management Console.

Managing User Specific Settings

When logged on as an administrator, you can change settings for other users.



Figure 6

On the Management Console, select the user you want to change and select the “Settings” button to access various specific settings options. You will be prompted to log in as a Parental Controls Administrator. (See Figure 7)

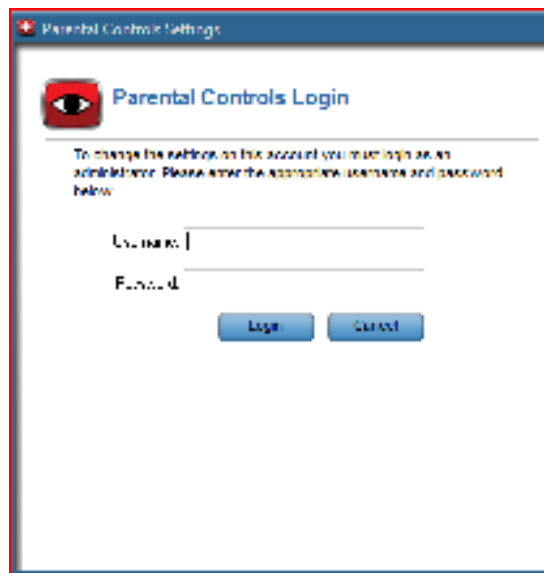


Figure 7

The settings you can change include:

- General Settings
- Filter Settings
- Time Controls
- White List
- Blocked Sites



General Settings

The General Settings tab allows user-level customization of specific applications, such as instant messaging, file sharing and web browsing. This section has specific settings for:

- Instant Messaging blocking
- Peer-to-peer blocking (P2P)
- FTP blocking
- Blocking of file downloads
- Inactivity timeout settings

These controls allow protection from outside users, files and activity from harming your PC or family. (See *Figure 8*)

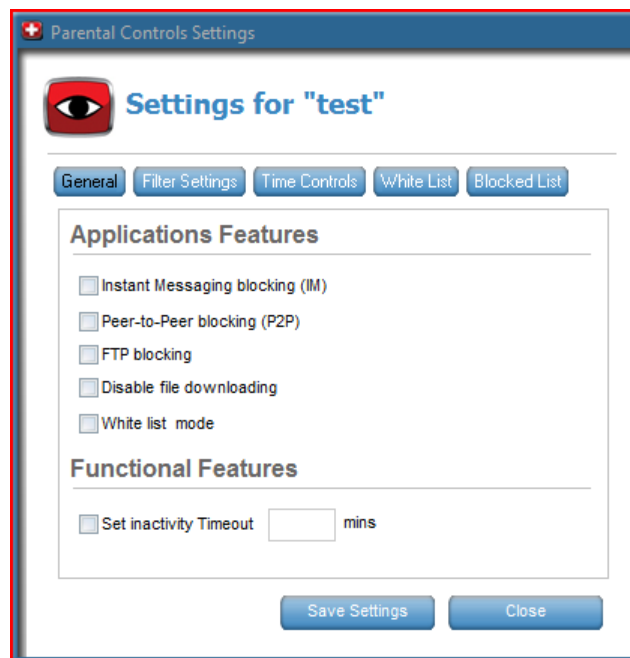


Figure 8

Filter Settings

The Filter Settings tab allows specific categories to be blocked based on User Profile. The library of these sites are maintained and updated on the program through the automatic updates feature. (See Figure 4)

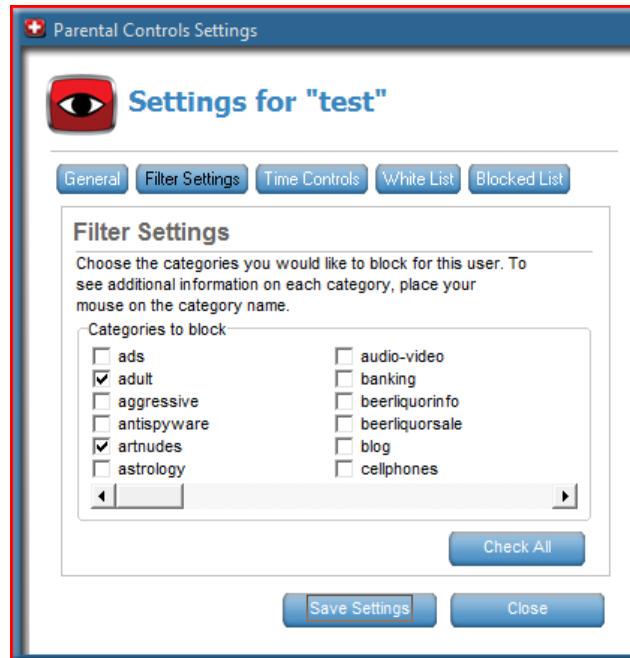


Figure 9

The following is a list categories or activities that can be blocked:

ads	Advert servers and banned URLs
adult	Sites containing adult material, such as swearing, but not porn
aggressive	Similar to violence, but more promoting than depicting
antispysware	Sites that remove spyware
artnudes	Art sites containing artistic nudity
astrology	Astrology web sites
audio-video	Sites with audio or video downloads
banking	Banking web sites
beer liquor info	Sites with information only on beer or liquors
beer liquor sale	Sites with beer or liquors for sale
blog	Sites with blogs
cell phones	Items for mobile/cell phones
chat	Sites with chat rooms, etc.
childcare	Sites to do with child care
cleaning	Sites about cleaning
clothing	Sites about clothing and selling clothing
culinary	Sites about cooking
dating	Sites about dating

desktop sillies	Sites containing screen savers, backgrounds, cursers, pointers, desktop themes and similar time wasting and potentially dangerous content
dialers	Sites with dialers, such as those for pornography or trojans
drugs	Drug-related sites
ecommerce	Sites that provide online shopping
entertainment	Sites that promote movies, books, magazine, humor
file hosting	Sites for hosting
financial	Financial sites
French education	Sites to do with French education
gambling	Gambling sites, including stocks and shares
games	Sites with games
gardening	Gardening sites
government	Military and schools, etc.
hacking	Hacking/cracking information
home repair	Sites about home repair
hygiene	Sites about hygiene and other personal grooming related information
instant messaging	Sites that contain messenger client download and web-based messaging sites
jewelry	Sites about jewelry and selling jewelry
job search	Sites for finding jobs
kids time wasting	Sites kids often waste time on
mail	Webmail and e-mail sites
marketingware	Marketingware
medical	Medical sites
mixed_adult	Adult websites
mobile-phone	Mobile phone sites
naturism	Sites that contain nude pictures and/or promote a nude lifestyle
news	News sites
online auctions	Online auctions
online games	Online gaming sites
online payment	Online payment sites
personal finance	Personal finance sites
pets	Pet sites
phishing	Sites attempting to trick people into giving out private information
porn	Pornography
proxy	Sites with proxies to bypass filters
radio	Non-news related radio and television
reaffected	Reaffected
religion	Sites promoting religion
ringtones	Sites containing ring tones, games, pictures, etc.
search engines	Search engines such as Google
sexual_education	Sexual education sites

sexuality	Sites dedicated to sexuality, possibly including adult material
shopping	Shopping sites
social networking	Social networking sites
sport news	Sport news sites
sports	All sport sites
spyware	Sites who run or have spyware software to download
update sites	Sites where software updates are downloaded from, including virus signatures
vacation	Sites about vacations
verisign	Verisign sites
violence	Sites containing violence
virus infected	Sites that host virus infected files
warez	Sites with illegal pirate software
weapons	Sites detailing or selling weapons
weather	Weather news sites and weather related sites
webmail	Webmail sites
white list	Contains site specifically 100% suitable for children

Time Controls

The Time Controls tab allows the administrator to set the number of hours per year, hours per month, hours per week and hours per day that a user can have access to the Internet. (See Figure 10)

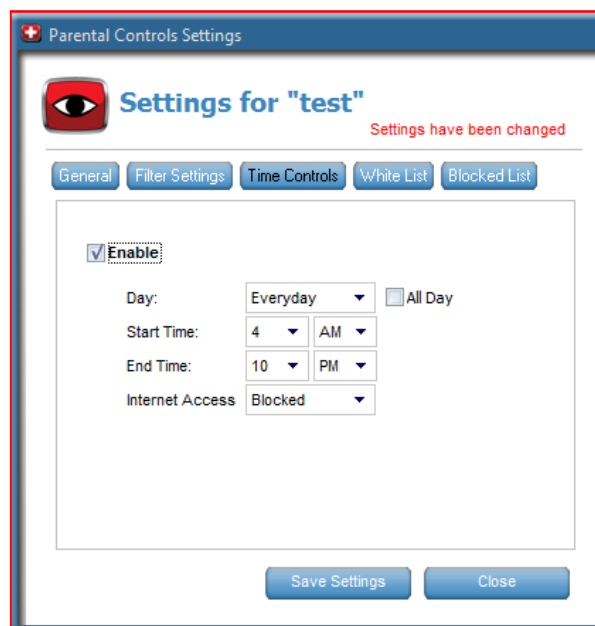


Figure 10

Additionally, controls can be placed on days of the week, and specific time periods.

If attempts are made to access the Internet during the times that are not allowed, the user will not be able to display a web page in a browser.

White List

The White List tab allows the administrator to create a list of approved web sites that a user can access regardless of their inclusion in a filtered or blocked group. (See *Figure 11*)

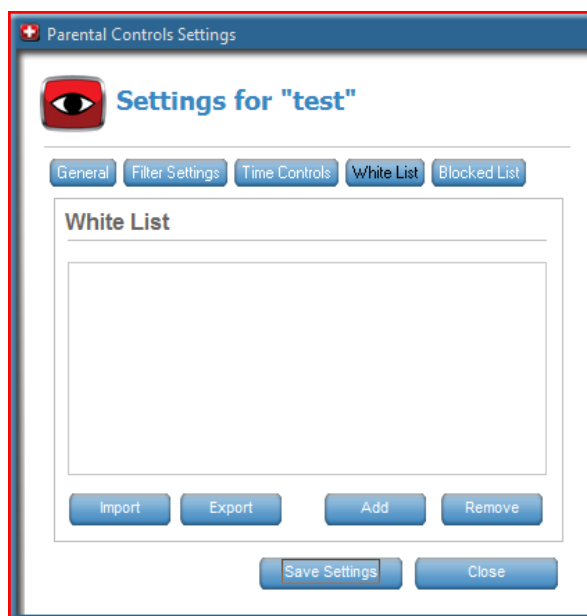


Figure 11

This feature also allows the administrator to add a single site to the White List so it can be accessed by a user who may not have access to other sites in a related category. Any sites on the White List will over-ride attempts to block access to it. The administrator can select the "Add" or "Remove" button to manage the sites on the White List.

Blocked Sites

The Blocked Sites tab allows the administrator to view a list of blocked web sites. (See *Figure 12*)

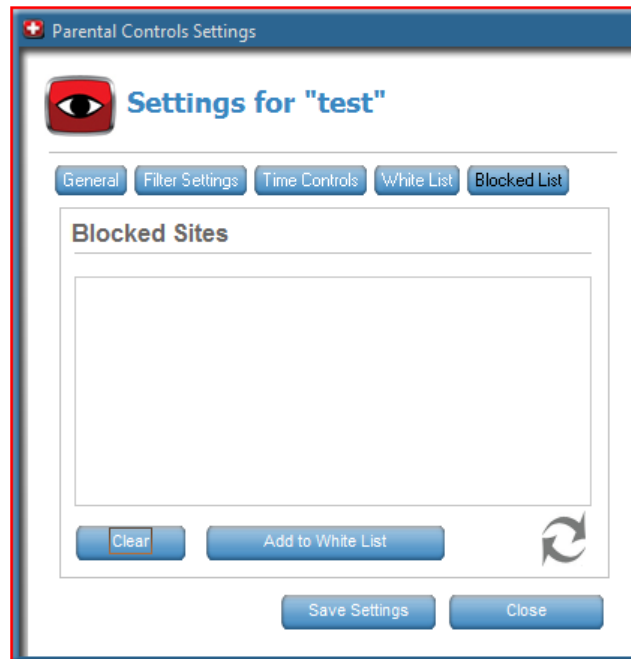


Figure 12

The administrator can select the "Clear" button to clear the list of blocked sites or "Add to White List" to manually add a web site to the White List.

Accessing the Internet

Depending on which user you are logged in as will determine what settings Parental Controls will use while you are using the Internet. Administrators will have normal access while Default or Custom users will be limited to the categories and functions selected for them.

There are two locations where you can change what user rights you wish to use to access the Internet. You can right click the SCControlPanel.exe in your system tray you will a section called “Access the Internet as User.” This will show you which user name you are using. (See Figure 13)

The other location is the “Parental Controls Settings” section of the Management Console. This is only viewable if you are logged in as a local administrator account. (See Figure 14)

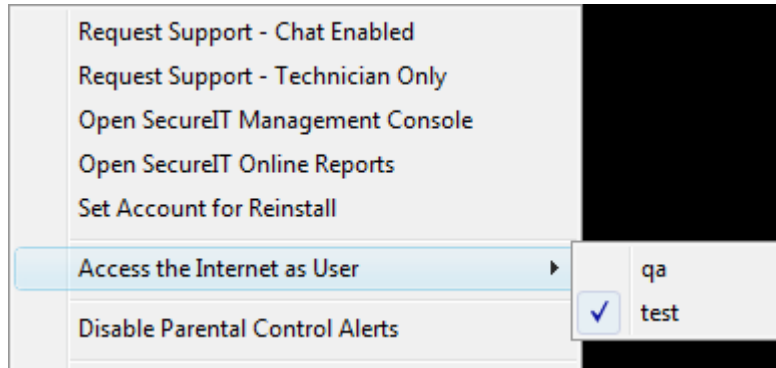


Figure 13



Figure 14

If you select a user with Default or Custom settings while logged on as the administrator, it will automatically switch to that user's settings. To do this from the Control Panel simply click the user you want, or if you are in the Management Console click the "Change Logged User." If you wish to access the Internet as an administrator but are logged in as a Default or Custom user you will need to enter the administrator username and password. (See Figure 15)



Figure 15

If the user uses the incorrect username and/or password, they will need to re-enter the correct user name and password. Access to the Internet will not be granted until a valid user name and password have been entered.

Attempts to Access a Filtered or Blocked Site

Each time an attempt is made to access a filtered or blocked web site, access to the site is denied and a message is sent to the browser window on the computer informing the user that access for that web site is blocked. The browser will be redirected to an Internet page that displays what site has been blocked.

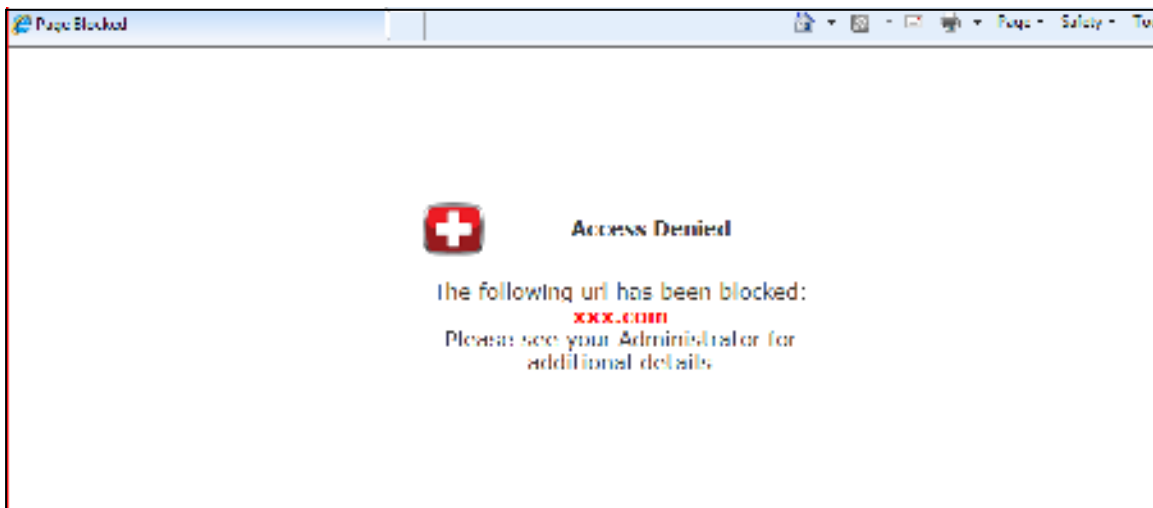


Figure 16

Over-Riding a Filtered or Blocked Site

If a site is filtered or blocked, a message will be displayed to the user with two buttons – “Override” and “Close.” (See *Figure 17*)

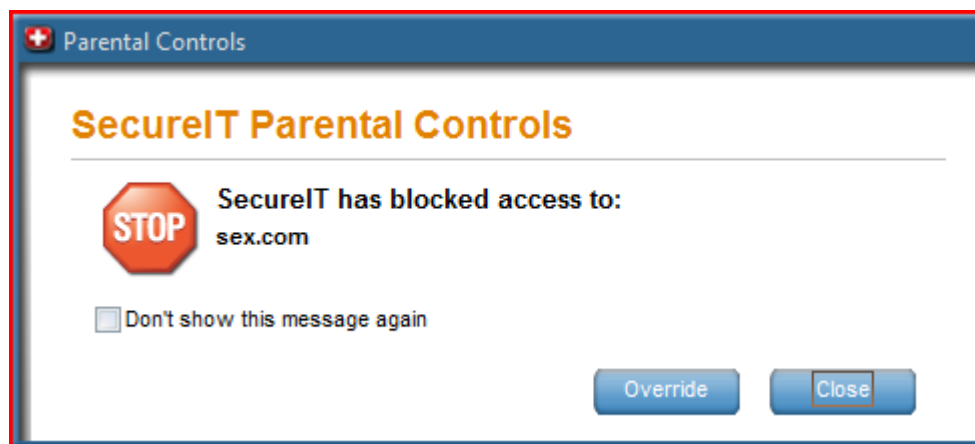


Figure 17

If the “Override” button is selected, it will prompt the user for a user name and password. If a user who has administrator access enters a correct user name and password, it will allow this site to open and temporarily add the site to the “White List.”

If you do not want to see the blocked site message again, you can place a check in the “Don’t show this message again” box.

Automatic Updates

As with all aspects of SecureIT Services, updates to the service are automatic and require no user intervention.